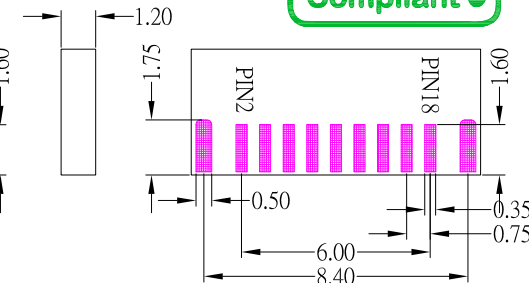
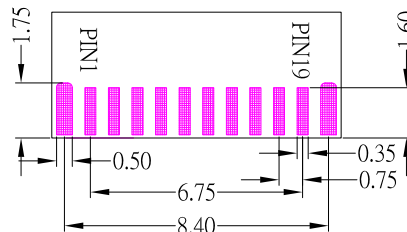
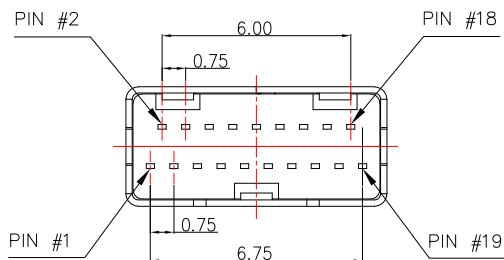




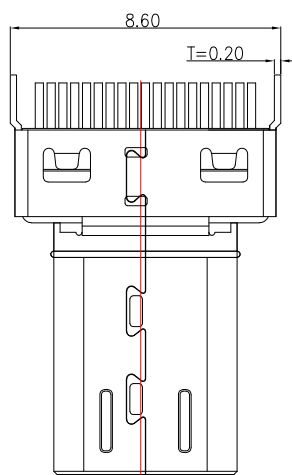
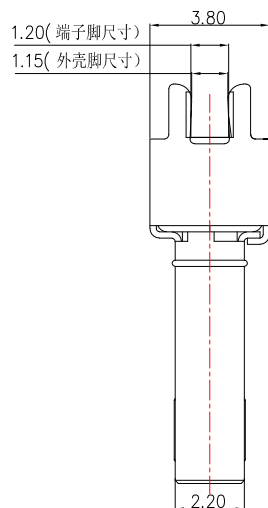
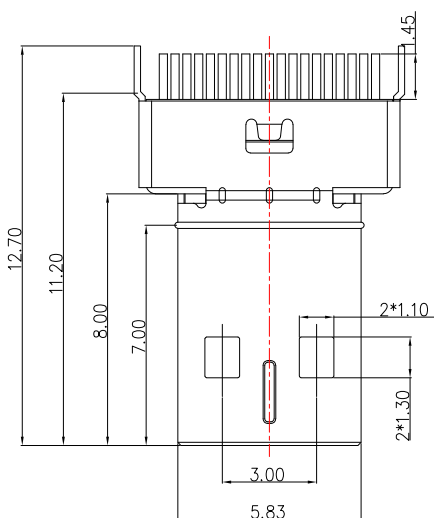
# HDMI-D-19PL3xx-S165

外殼材質：  
Blank : Brass  
I : Spcc

外殼電鍍材質：  
Blank : Nickel  
G : Au



PCB LAYOUT



SPECIFICATIONS :

- 1.RATING: 40V , 0.3A
2. CONTACT RESISTANCE : 40 mΩ MAX
3. INSULATION RESISTANCE : 10 MΩ MIN
4. DIELECTRIC STRENGTH : 150V AC / 1 minute
5. DURABILITY : 5,000 cycles
- 6.TEMPERATURE RANGE : -25°C ~ +85°C

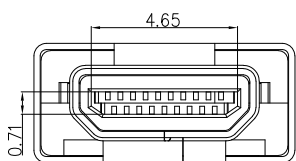
Material:

- 1.Housing: LCP
- 2.Contact: Phosphor Bronze
- 3.Shell: Brass / Spcc

Finish:

- 1.Contact: Plated Gold in Mating Area ;  
Tin Plated on Solder Balls ;
- Nickel under plated overall

PIN	Signal Assignment
1	Hot Plug Detect
2	Utility
3	TMbS Data2+
4	TMbS Data2 Shield
5	TMbS Data2-
6	TMbS Data1+
7	TMbS Data1 Shield
8	TMbS Data1-
9	TMbS Data0+
10	TMbS Data0 Shield
11	TMbS Data0-
12	TMbS Clock+
13	TMbS Clock Shield
14	TMbS Clock-
15	CEC
16	bDC/CEC Ground
17	SCL
18	SbA
19	+5V Power



ITEM NO.	DESCRIPTION	DRAWN	DATE
5	新增pin定義	Jack	100924
4	更新樣式	Jack	070424
3	更新圖面	Jack	070324
2	更新PCB LAYOUT 中PIN編號位置	Jack	051024
1	新增PCB LAYOUT 尺寸	Jack	092220



TOLERANCE UNLESS OTHERWISE STATED :

Up to 5	±0.2	3RD. ANGEL'S	UNITS	MM
Above 5 ~ 15	±0.3			
Above 15 ~ 30	±0.4			
Above 30 ~ 50	±0.5			
Angle	±0.3°			

DRAWN BY:	DATE	MATL	TITLE	CONNECTOR
Jack Lu	10/09/24			
CHECKED BY:	DATE	FINISH	MODLE	HDMI D TYPE 公頭夾板式 板厚:1.2mm
Jacky Chen	10/09/24			
APPROVED BY:	DATE	SCALE	DWG NO.	HDMI-D-19PL3xx-S165
Tony Kao	10/09/24	1 : 1		
SHEET NO.	1 of 1	PART NO.	HDMI-D-19PL3xx-S165	SIZE
				A4
				VER
				R5